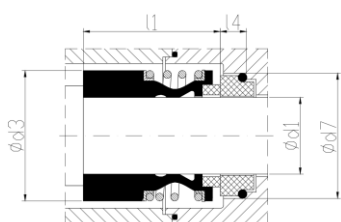


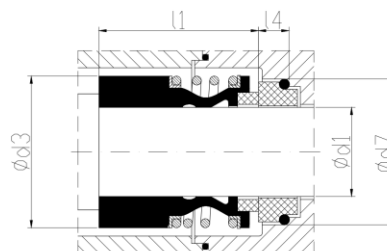
Торцевые уплотнения для насосов GRUNDFOS

NM LT



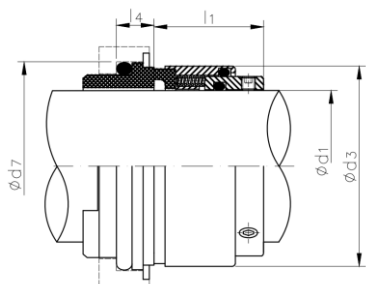
d ₁	d ₃	d ₇	l ₁	l ₄
12	24	23	25,9	15,0
16	28	27	28,4	12,3
22	36	37	30,0	11,1
33	51	48	35,0	7,5

NM-12 / NM-13



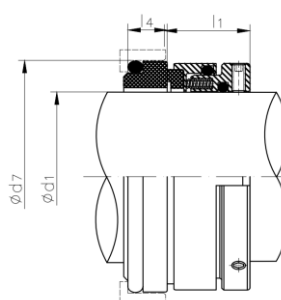
d ₁	d ₃	d ₇	l ₁	l ₄
28	47	43	42,5	7,5
38	58	56	46,0	9,0
45	65	63	36,0	9,0
55	78	75	59,0	12,0
65	90	85	69,0	14,5

BV-2/SRL



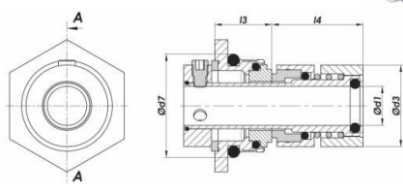
d ₁	d ₃	d ₇	l ₁	l ₄
25	39	38	29.9	9.6
32	46	48	32.4	11
38	54	55	33.9	11.2
50	66	69.3	34.4	14
65	85	85.4	38.9	15.3
95	114.9	120	62.8	17.2
110	131.5	140.3	70	16.5
120	141.3	150.3	36.5	20

BV-4/SRL



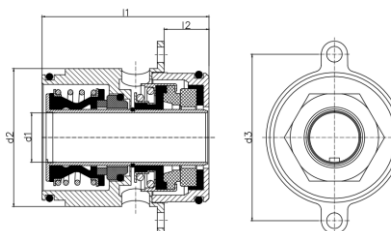
d ₁	d ₃	d ₇	l ₁	l ₄
30	46	45	24	10
38	58	56	27	11
50	70	70	27	13
65	90	85	32	13

GR2

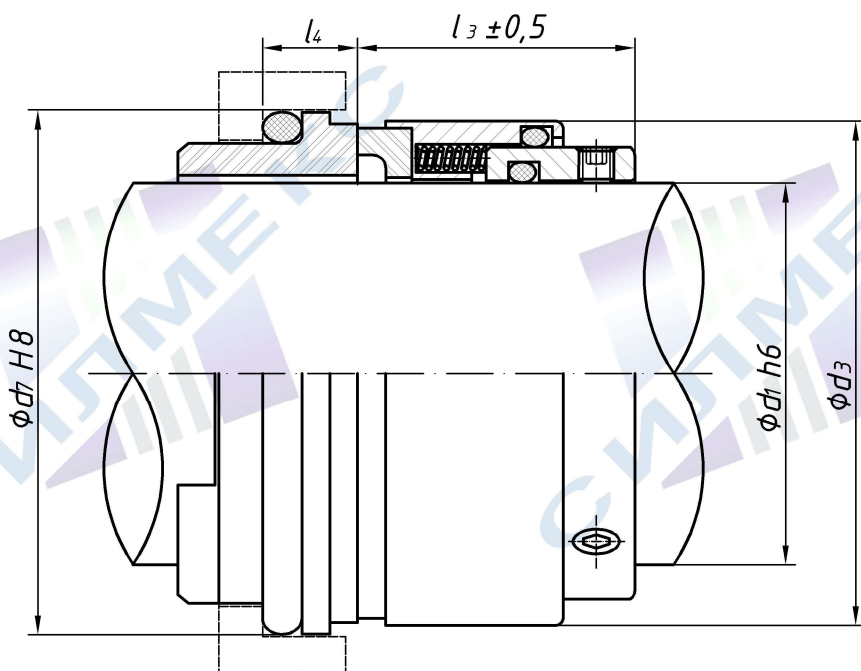


d ₁	d ₃	d ₇	l ₃	l ₄
12	25,2	29	19,5	32,0
16	29,7	34	20,5	32,0
22	43	50	26	37,0

NM-GSE



d ₁	d ₂	d ₃	l ₁	l ₂
22	61,6	74	63,3	12,3
32	74	88	69,5	9,5



d_1	d_3	d_7	l_3	l_4
25	39	38	29,9	9,6
32	46	48	32,4	11
38	54	55	33,9	11,2
50	66	69,3	34,4	14
65	85	85,4	38,9	15,3
95	114,9	120	62,8	17,2
110	131,5	140,3	70	16,5
120	141,3	150,3	36,5	20